



**Wespath**

BENEFITS | INVESTMENTS

Center for Health

August 2017

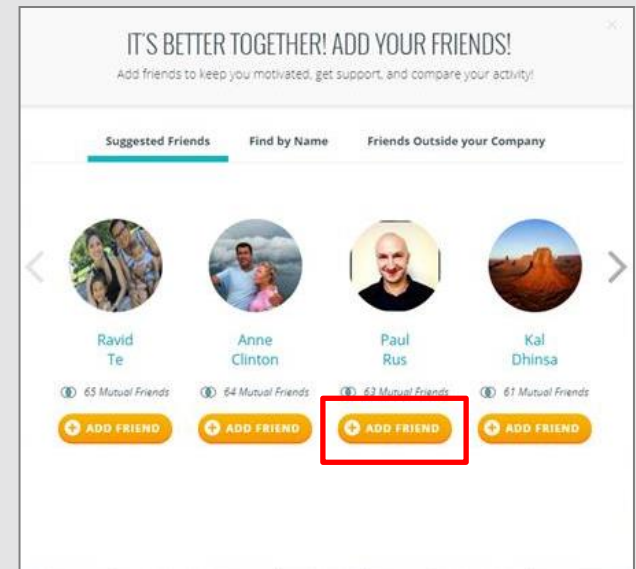
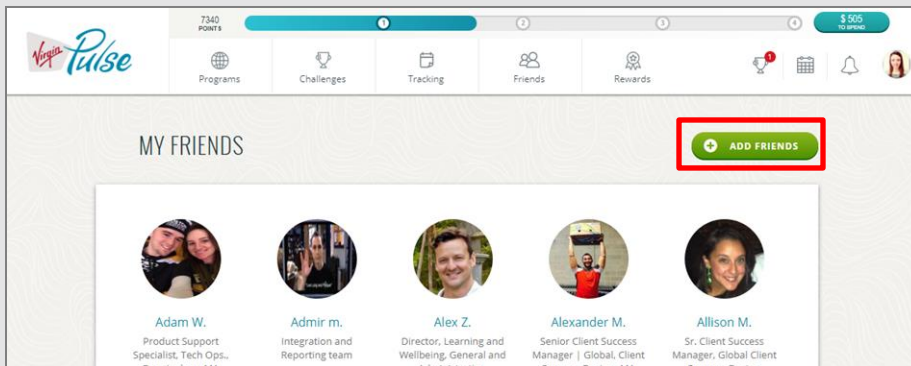
# HealthFlex Plan Sponsor Calls

# Virgin Pulse Social Platform

- Creating connections with **engaged population**
- Creating connections with those **outside of Virgin Pulse**
- New **“Refer a Friend”** program
- **Challenges**

# Virgin Pulse Social Platform

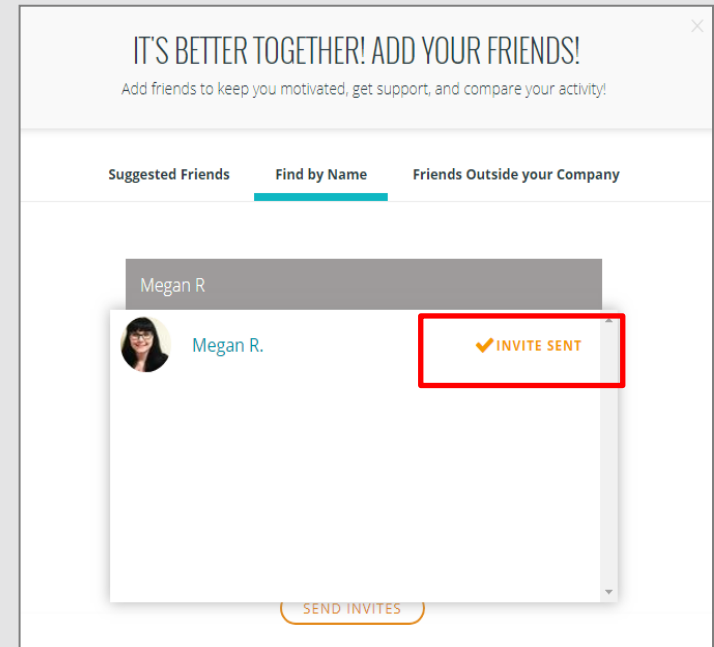
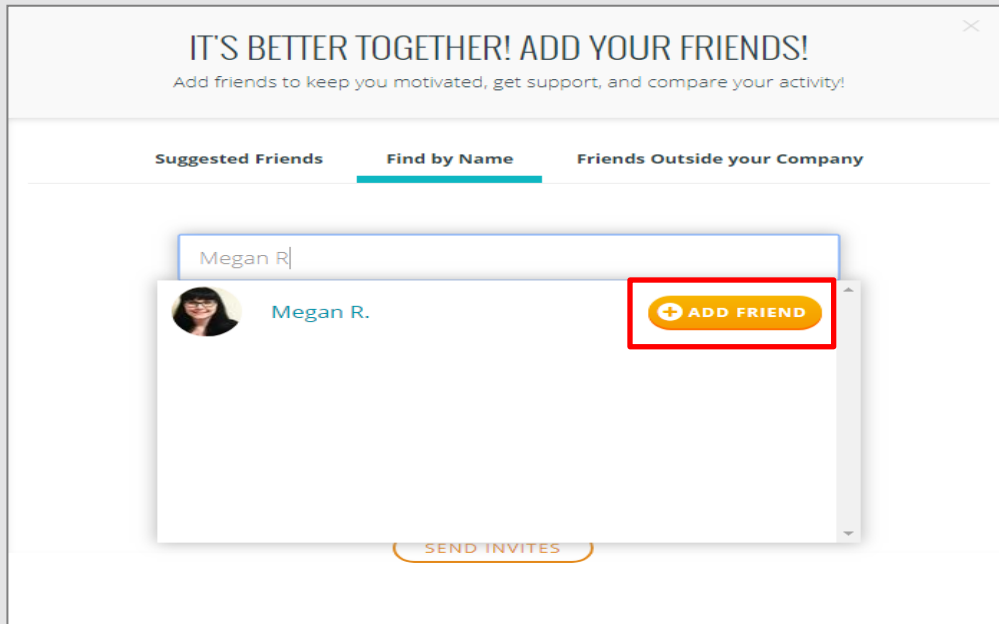
## Creating connections with engaged population



VP makes suggestions to connect

# Virgin Pulse Social Platform

## Search for your friends by name



Creating connections with engaged population

# Virgin Pulse Social Platform

Invite family and friends to join you who are not covered by HealthFlex

IT'S BETTER TOGETHER! ADD YOUR FRIENDS!  
Add friends to keep you motivated, get support, and compare your activity!

Suggested Friends   Find by Name   **Friends Outside your Company**

Invite close friends & family (*what's this?*) to join the fun with you on Virgin Pulse!  
**You have 8 invites left.**

Your Friend's Full Name:    Your Friend's Email:    **SEND**

Shane Morin   Sue Dengenis

IT'S BETTER TOGETHER! ADD YOUR FRIENDS!  
Add friends to keep you motivated, get support, and compare your activity!

Suggested Friends   **Find by Name**   Friends Outside your Company

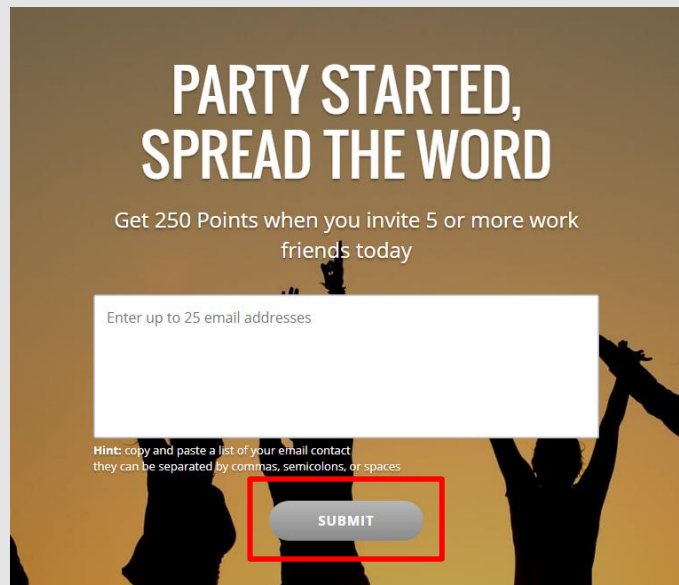
Search for Friends by First and Last Name

**Can't Find Someone?**  
Invite work friends to join, get rewarded

**SEND INVITES**

# Virgin Pulse Social Platform

## New “Refer a Friend” program



Earn **250 points** when you invite 5 friends within the UMC

# Virgin Pulse Social Platform

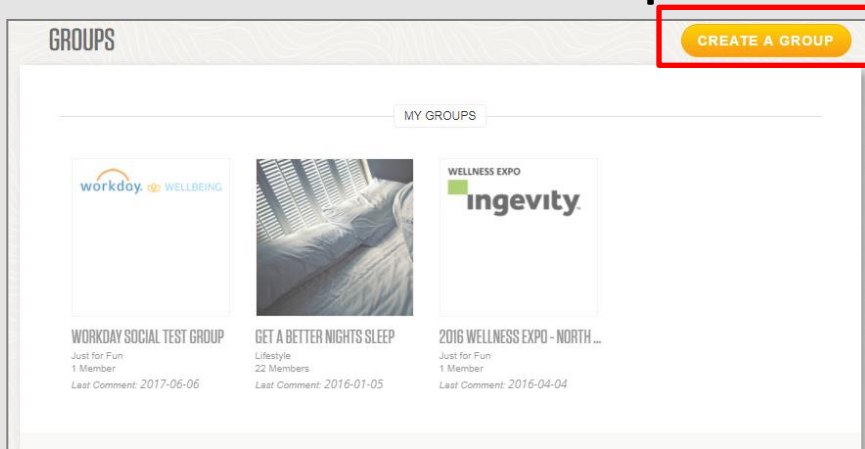
- Join a Group
- Search
- Click “Join Group”

The screenshot displays a grid of group cards on the Virgin Pulse Social Platform. At the top, there are two dropdown menus: "Sort By: Name" and "Show: All Groups". The grid contains 12 group cards, each with a profile picture, a "JOIN GROUP" button, and text describing the group. The "OREGON-IDAHO UNITED METHO..." group is highlighted with a red border. The groups listed are:

Group Name	Category	Members	Last Comment
The South Georgia Conference of The United Methodist	Just for Fun	1 Member	14 hours ago
NATURE WALKERS	Activity	12 Members	2017-08-05
GREAT PLAINS UMC	Just for Fun	9 Members	2017-07-17
IGRC	Just for Fun	17 Members	2017-07-08
PACIFIC NORTHWEST UMC	Just for Fun	2 Members	2017-07-07
OREGON-IDAHO UNITED METHO...	Activity	1 Member	2017-07-07
PASTORS SPOUSE	Activity	3 Members	2017-06-28
SUSQUEHANNA U.M.C. CONFERE...	Just for Fun	2 Members	2017-05-27
UPPER NEW YORK ANNUAL CON...	Just for Fun	9 Members	2017-05-13
THE UPPER ROOM	Just for Fun	8 Members	2017-05-08
United Methodist Churches of Indiana	Just for Fun	17 Members	2017-04-12
THE UNITED METHODIST CHURCH OF NORTH TEXAS	Just for Fun	6 Members	2017-04-11

# Virgin Pulse Social Platform

## Create a Group



CREATE A GROUP

NAME

CATEGORY

DESCRIPTION

GROUP PHOTO

Upload

We recommend files at least 600x600 px and under 100k

Cancel CREATE A GROUP





# Virgin Pulse Social Platform

- Challenge—**healthy habit or activity**
  - Personal
  - Invite friends (up to 249)

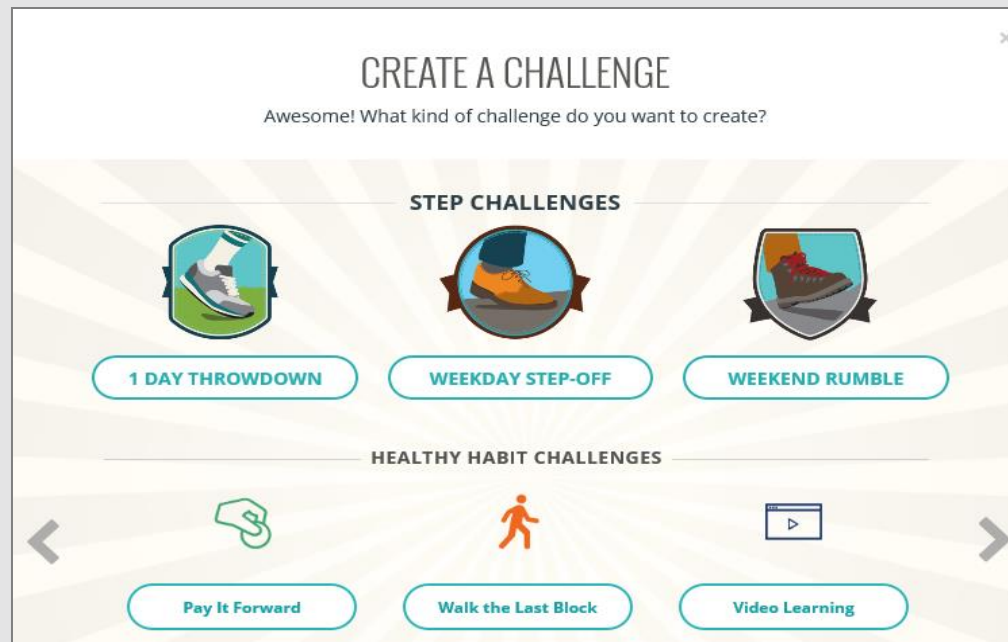
MY CHALLENGES

[+ CREATE CHALLENGE](#)

PERSONAL CHALLENGES(2)	RANK	# OF PLAYERS	STATUS
 <b>WEEKEND RUMBLE</b> WEEKEND RUMBLE		<a href="#">JOIN</a>	STARTS <b>AUG 12</b>
 <b>1 DAY THROWDOWN</b> 1 DAY THROWDOWN			CHALLENGE COMPLETE

# Virgin Pulse Social Platform - Challenges

- Challenges
  - Select **type of challenge**



# Virgin Pulse Social Platform - Challenges

- Challenges for large groups or conference-wide
  - Invite all enrolled to an activity challenge
  - Permission granted to specific individual(s) at each plan sponsor
  - Easy to set up
  - Instructions on Wespath Extranet  
<https://extranet.gbophb.org/express/VP/>
  - Questions or support for challenges, contact [welnessteam@wespath.org](mailto:welnessteam@wespath.org)



**Wespath**

BENEFITS | INVESTMENTS