



MEDICAL CARE
RISK ADVISORY
ACCIDENT

HEALTH INSURANCE
PROTECTION
BLOOD TEST

HealthFlex Summit—October 2021



Wespath
BENEFITS | INVESTMENTS

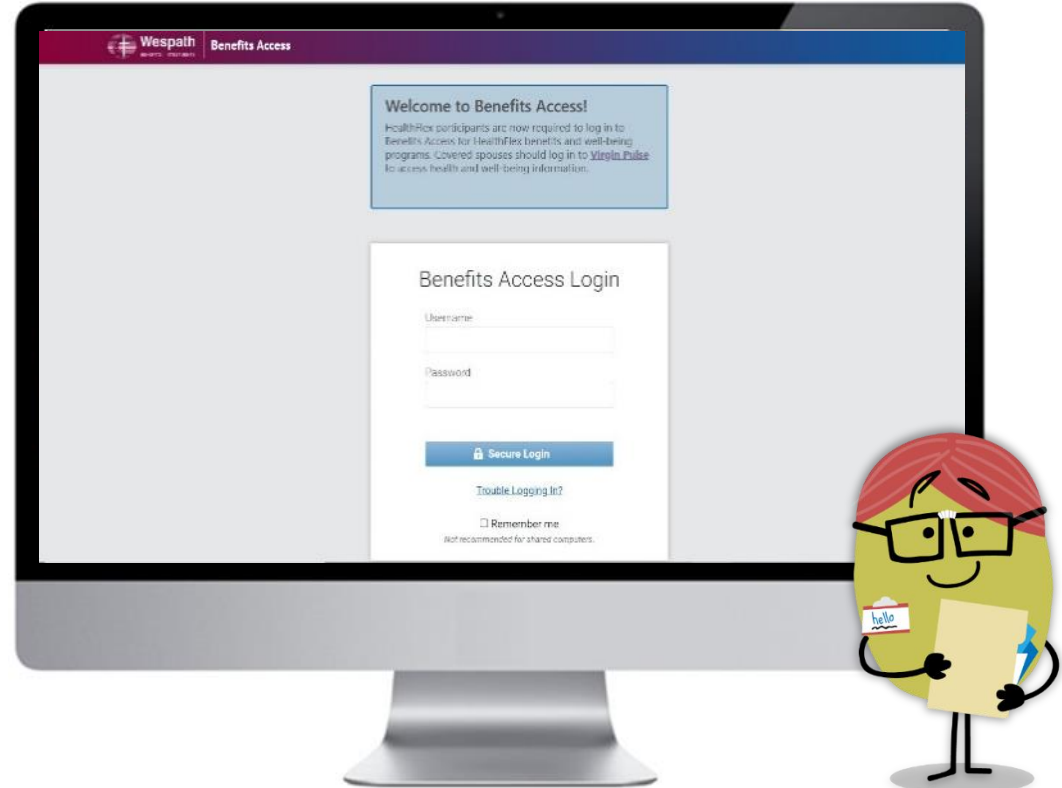
Annual Election through Benefits Access

Making HealthFlex Elections

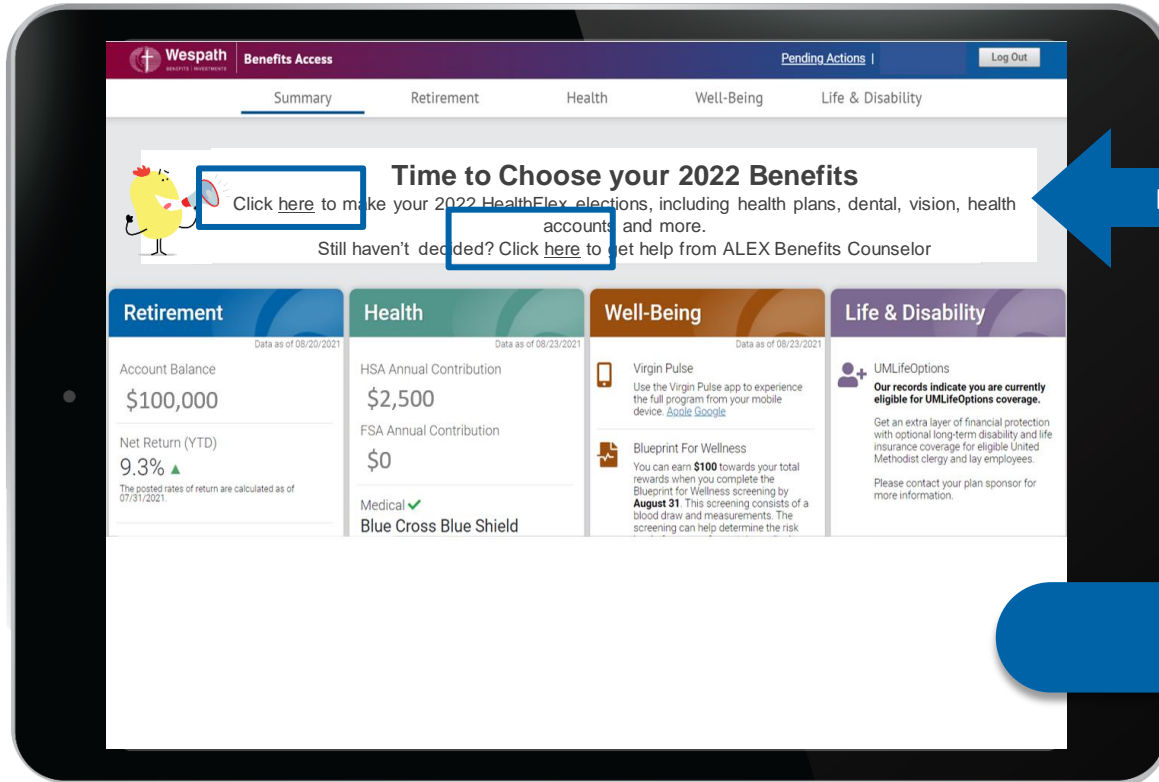
Start at [Benefitsaccess.org](https://benefitsaccess.org)

Find:

- ALEX Benefits Counselor
- Annual Election portal
- More plan details



Making HealthFlex Elections



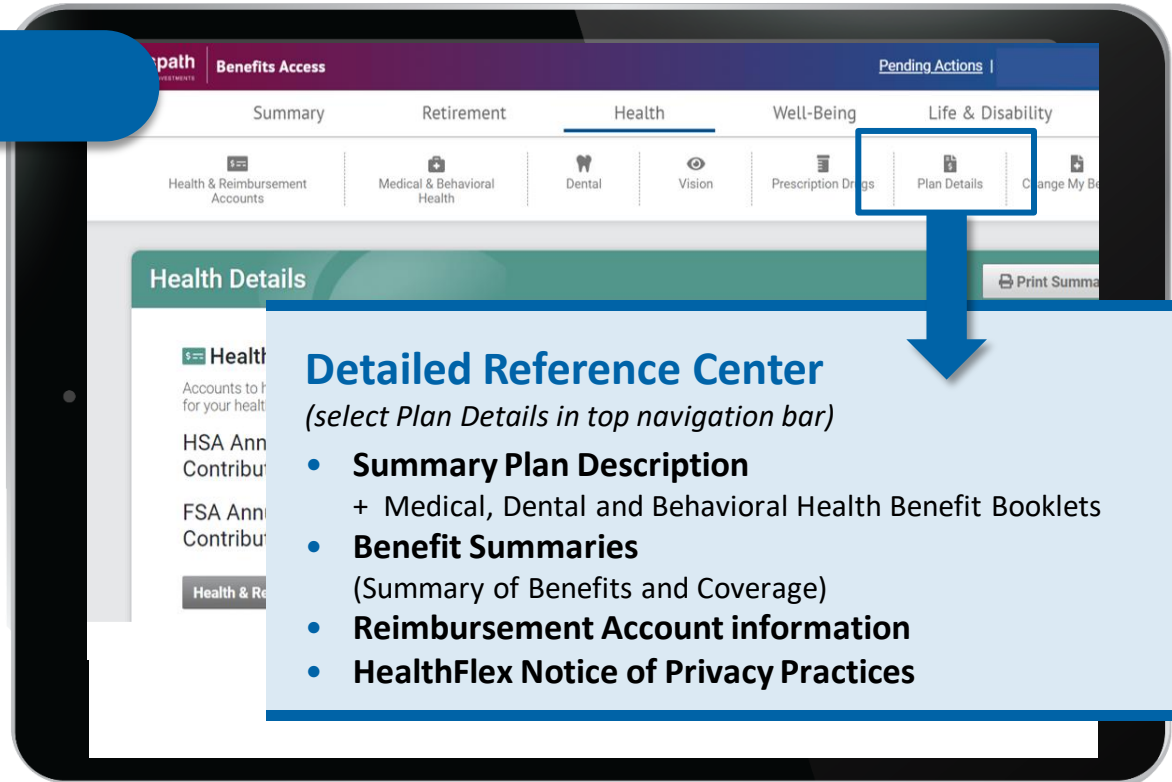
Both links sign in directly to Benefitsolver

Benefitsaccess.org

Access More Details/HealthFlex Reference Center

Benefitsaccess.org

- Plan Details → Reference Center
- HealthFlex Details and FAQs (scroll down on Health page)

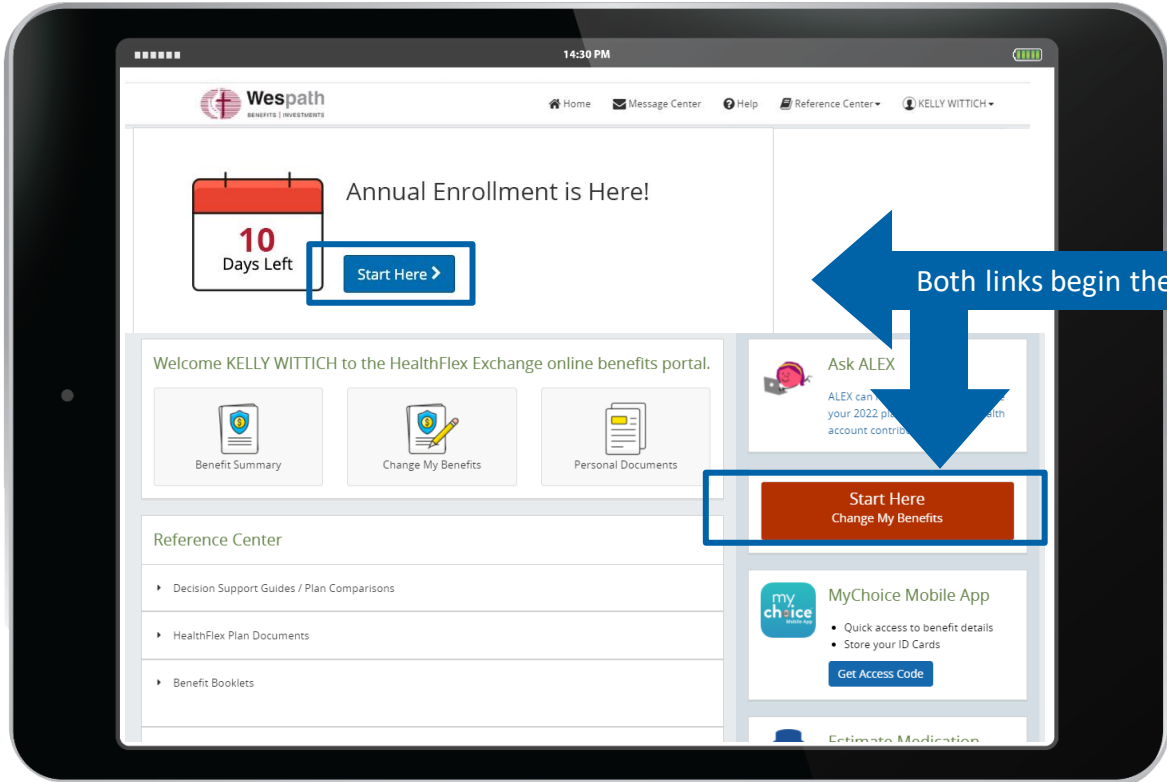


The screenshot shows the Wespath Benefits Access website interface. The top navigation bar includes 'Summary', 'Retirement', 'Health', 'Well-Being', and 'Life & Disability'. Under the 'Health' tab, there are icons for 'Health & Reimbursement Accounts', 'Medical & Behavioral Health', 'Dental', 'Vision', 'Prescription Drugs', 'Plan Details', and 'Change My Benefits'. A blue box highlights the 'Plan Details' icon, with a large blue arrow pointing down to a callout box. The callout box contains the following text:

Detailed Reference Center
(select Plan Details in top navigation bar)

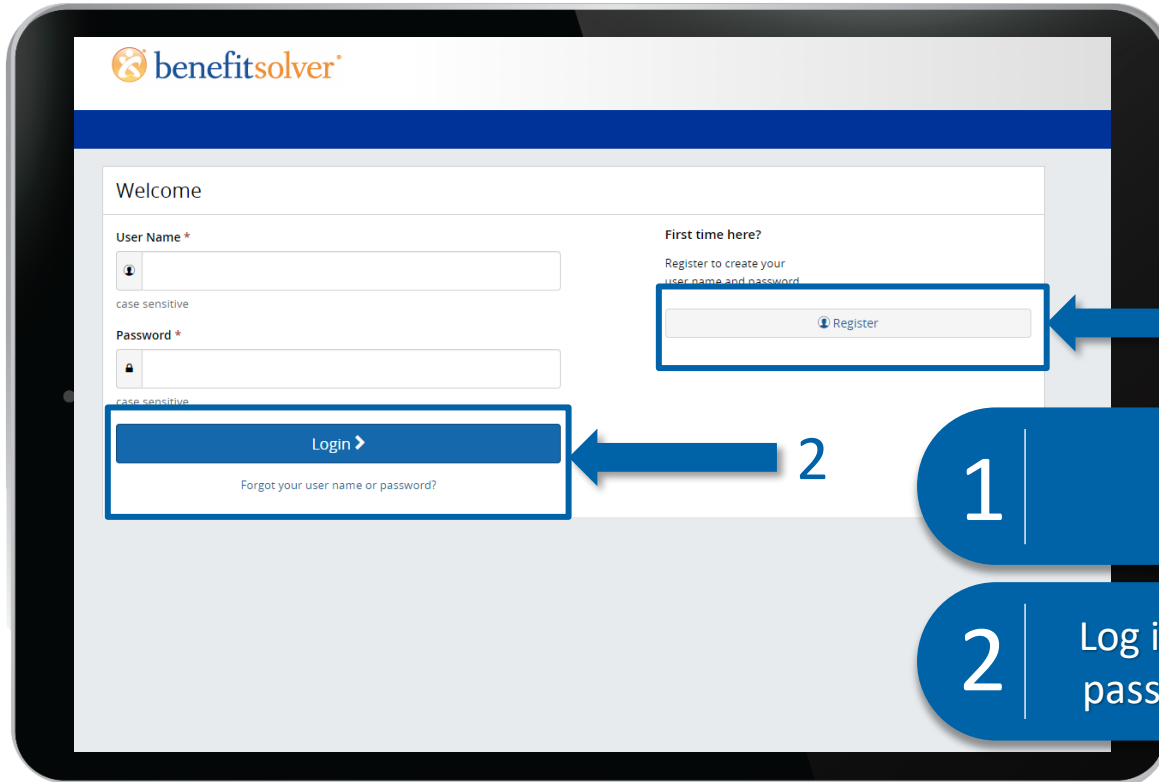
- **Summary Plan Description**
+ Medical, Dental and Behavioral Health Benefit Booklets
- **Benefit Summaries**
(Summary of Benefits and Coverage)
- **Reimbursement Account information**
- **HealthFlex Notice of Privacy Practices**

Making HealthFlex Elections



Both links begin the Annual Election process

Alternative: Direct Access to Benefitsolver



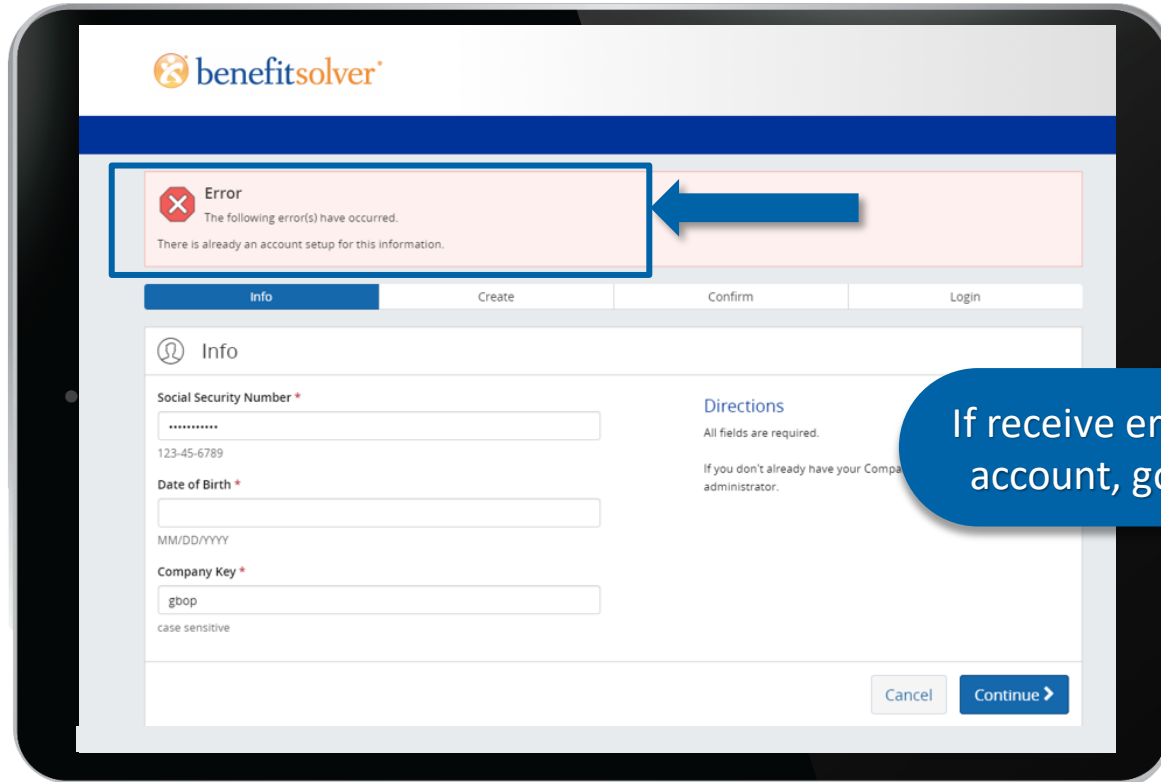
1

Benefitsolver.com
Click Register

2

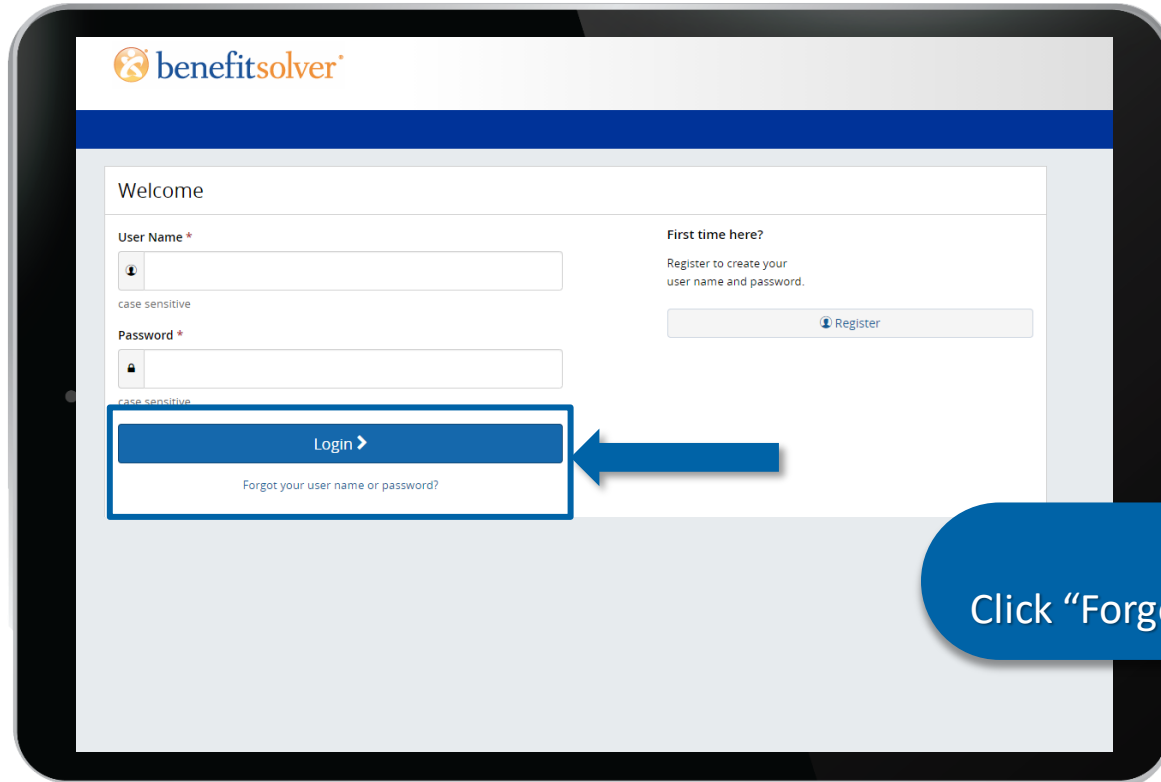
Log in with your new username and
password, and begin your elections

Error Message and Reset



If receive error that you already have an account, go back to benefitsolver.com

Forgot Your User Name?



Benefitsolver.com
Click “Forgot your user name or password?”

Verify User Information

benefitsolver

Password Reset

Verify User Information

Social Security Number *
.....
123-45-6789

Date of Birth *
MM/DD/YYYY

Company Key *
gbop
case sensitive

Directions
Forget your user name or password? To verify that you already have an account in our system, please enter your Social Security Number or Member ID, Date of Birth, Zip Code, and Company Key (provided by your benefits administrator). All fields are required and case sensitive. Once you have completed these fields, click on Continue to

Cancel

Enter SSN and DOB
Company Key: gbop (no caps)

Password Reset

Wespath
BENEFITS | INVESTMENTS

Password Reset

Choose New Password

User Name
pastorjane

Password *

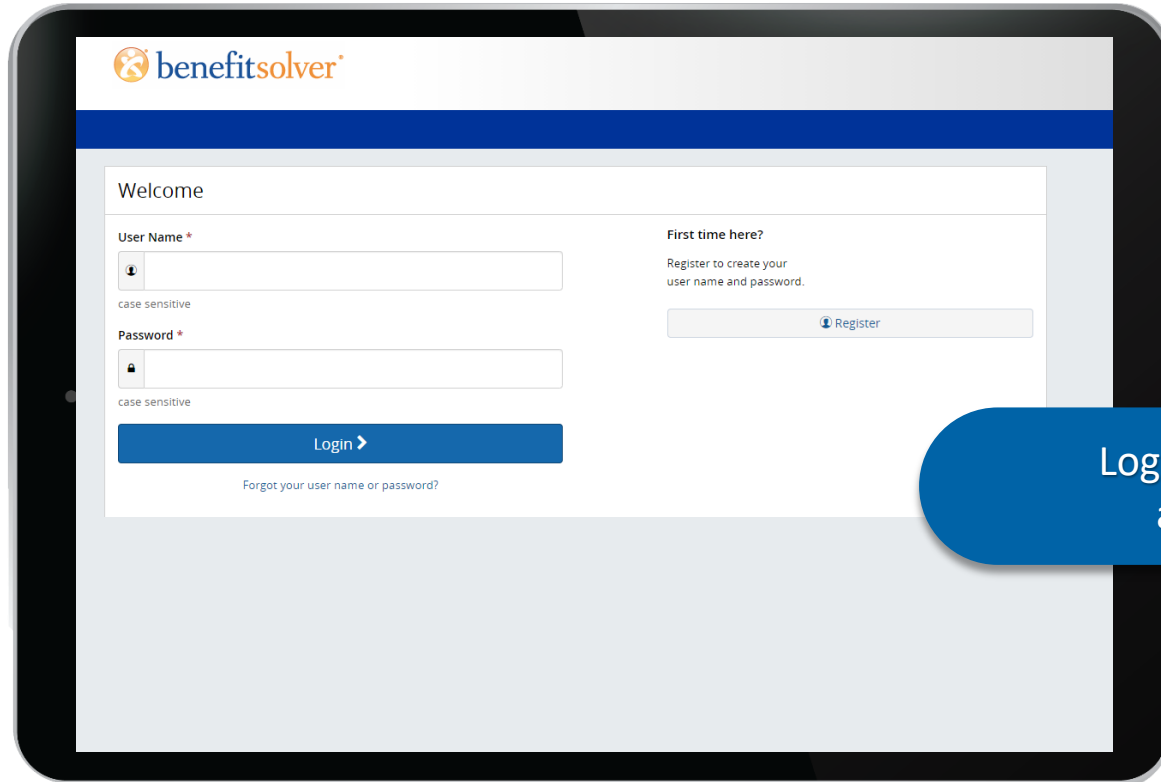
Strong

Confirm Password *

Directions
Your password must include a combination of k and be at least 7 characters. No spaces are allow

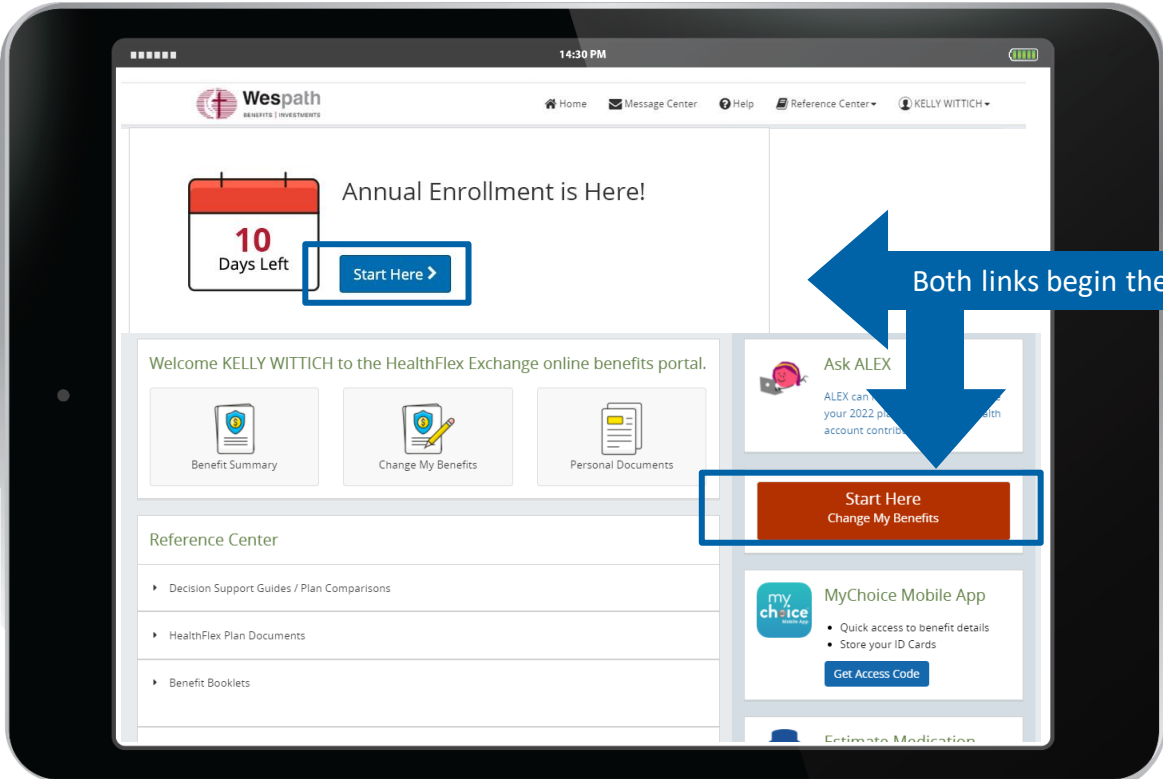
Answer a security question and choose a new (strong) password!

Benefitsolver Log In



Log in with your new password
and begin your elections

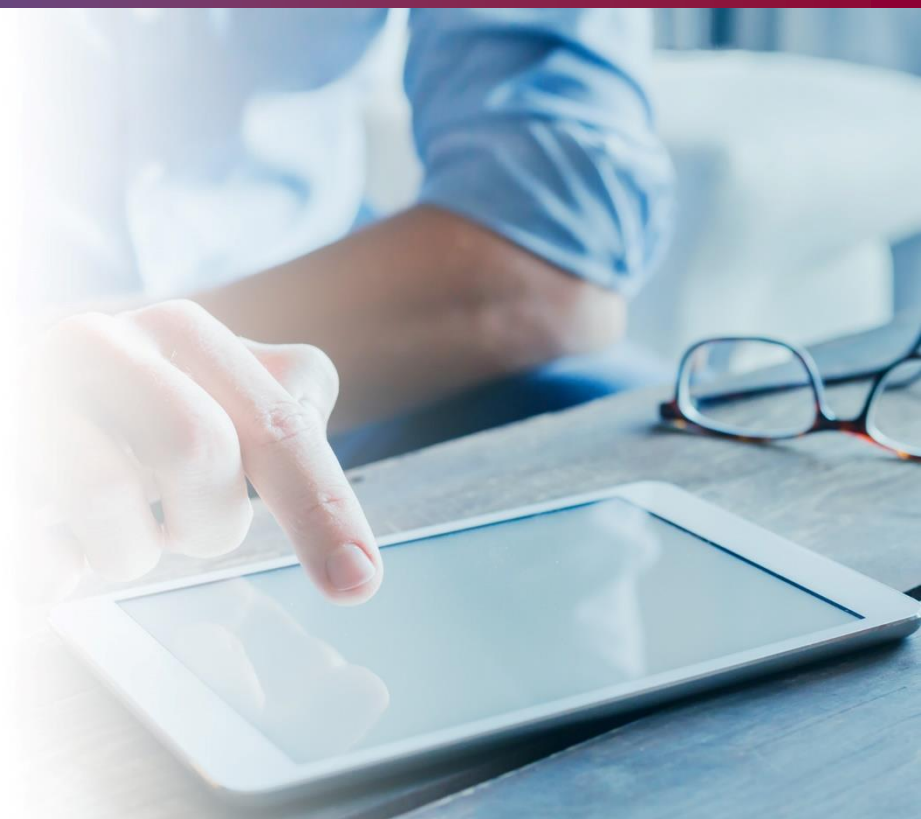
Making HealthFlex Elections



Both links begin the Annual Election process

Accessing Other Vendor Sites

- Directly
 - Virgin Pulse®
 - Blue Cross/UnitedHealthcare
 - OptumRx®
 - HealthEquity® (or use app)
- Through Virgin Pulse
 - Quest®
 - Employee Assistance Program
 - Omada®





Wespath

BENEFITS | INVESTMENTS